

# 2021-2022



**Chai Lifeline  
2021-2022  
Impact Report**



**Chai Lifeline is a leading international children's health support network, providing social, emotional, and financial assistance to children with life-threatening or lifelong illnesses and their families through a variety of free, year-round programs and services.**

# **Our Mission**

**To bring joy and hope to children and families  
impacted by serious illness, crisis or loss.**

**[www.chailifeline.org](http://www.chailifeline.org)  
212-465-1300**



**“While our  
approach may  
have changed,  
our impact has  
strengthened.”**





## A Community-Based Approach

As we transition to a (G-d willing) post-pandemic world, it is important to reflect and take note of the lessons COVID-19 has taught us. We all have our different takeaways, but for me, the past few years have underscored just how critical community is and how necessary that sense of belonging is in each of our lives.

For children and families confronting serious illness, crisis, or loss, life can be very lonely. Pandemic lockdowns, quarantines, and restrictions have only exacerbated that feeling of isolation. Undeterred by these limitations, Chai Lifeline rose to the challenge, providing support to nearly 6,000 families in 2021. We shifted our approach from the hospitals to the community—bringing our programs and services directly to our families, in innovative, impactful, and safe ways.

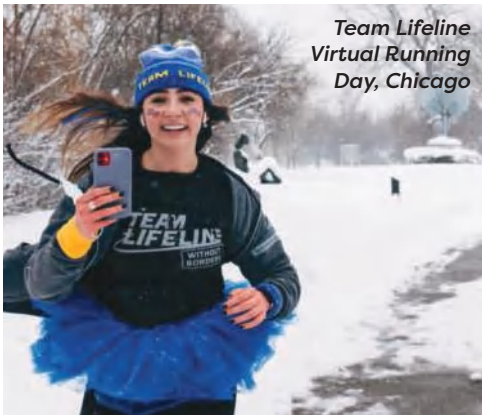
Our dedicated case managers and volunteers pivoted from hospital consultations to home-based and virtual visits. If a child could not travel to Camp Simcha, we brought Simcha to them through Camp Simcha Without Borders initiatives across our 12 regions. More than 800 children living with illness or loss in their families took part in i-Shine afterschool programs hosted in their local schools. In place of one national retreat for hundreds of families, we offered a series of weekend events targeting smaller, peer cohorts and fostering more meaningful relationships. When communities around the globe—from Meron, Israel to Surfside, Florida—were struck by catastrophic events, Project Chai crisis intervention teams mobilized to offer immediate mental health support and resources, reaching tens of thousands worldwide. As this report outlines, while our approach may have changed, our impact has strengthened.

**Of course, none of this would be possible without you.** Your generosity and friendship enable Chai Lifeline to build that community of support, helping families navigate the complex and lonely medical journey or cope with crisis and loss.

As I look to the future, I do so invigorated and inspired, knowing that together we will continue to transform lives for the better and bring joy and hope to those that need it most.

**Rabbi Simcha Scholar,**  
**Chief Executive Officer**

# 2021: The Year in the Review



*Team Lifeline  
Virtual Running  
Day, Chicago*

In January, Chai Lifeline announced the appointment of **Matthew Weisbaum** as director of its Southeast region.

More than 400 participants around the world took part in **Team Lifeline's first-ever virtual marathon** in support of Chai Lifeline on January 31.

On February 1, Chai Lifeline welcomed **Jack Tabbush** as its inaugural director of Camp Simcha Without Borders.

**After a blizzard devastated Texas** in February, Chai Lifeline Southeast mobilized its volunteers to deliver Shabbos meals and care packages to families in the area.

**Following the tragic crowd crush in Meron** on April 30—the most devastating civilian disaster in Israel's history—Chai Lifeline's Project Chai crisis teams mobilized to provide mental health support, interventions, presentations, and educational resources to tens of thousands across the globe.

In the aftermath of the horrific June 24 condominium collapse in **Surfside, Florida**, the Project Chai team was on the ground, offering resources, guidance, and support to the local community.



*Shabbos meal delivery, Texas*



*Project Chai's Rabbi Dr. Dovid Fox addresses community leaders in partnership with Jewish Community Services of South Florida*



*Jack Tabbush leads Camp Simcha Without Borders*



In summer 2021, **more than 1,000 children** impacted by serious illness took part in Simcha programming in cities across the globe.



On July 29, more than 600 cyclists took part in **Bike4Chai**, the world's largest experiential fundraiser per capita. One week later, on August 5, more than 100 women took part in Tour de Simcha.

In October, **New Jersey Governor Phil Murphy** paid a visit to the new offices of Chai Lifeline NJ/PA in Lakewood, NJ.

More than 800 gathered to celebrate and support Chai Lifeline at its **November 16 Annual Gala**, featuring a musical performance by Ishai Ribo and a one-of-a-kind kosher culinary experience presented by Wolfgang Puck.

More than 1,200 children with serious illnesses and their families got into the Chanukah spirit with Chai Lifeline's first-ever **Simcha Cruise** on November 21. Chanukah parties and events were held in regions across the country and more than 50,000 toys were distributed as part of the Chai Lifeline's annual toy drive.

Chai Lifeline ended the year with a series of **weekend retreats** at Camp Simcha for families and volunteers, helping them reconnect and recharge for the year ahead.



# 2021 Impact

**More than 800**  
children living  
with illness or  
loss in their  
homes took  
part in i-Shine  
afterschool  
programming  
in cities across  
North America

**497**  
families received  
emergency  
financial assistance  
through the Evan  
Levy Z"L Fund

**91,954**

meals delivered to hospitals and homes

**12** regional and  
international offices  
provided critical care  
and support families  
across the globe

**4,413**

Volunteers Worldwide





# 5,690

families supported

Families were provided with **6,098** hours of insurance advocacy and support, helping them navigate complex claims and save over \$1.2 million

Project Chai led

# 2,083

crisis interventions, trauma and bereavement workshops in schools, camps, and synagogues, reaching tens of thousands in communities across the world

# 12,979

rides provided to medical appointments



# More than 1,000

children impacted by cancer and chronic illness experienced the summer of a lifetime at Camp Simcha, Camp Simcha Special and Camp Simcha Without Borders

# \$0

cost of programs and services to Chai Lifeline families thanks to your support

“

**Yeshiva Toras Chaim will forever be grateful to Project Chai for the care, compassion and support they provided to our bachurim [students], staff, and parent body during our tragedy. As the crisis unfolded, in the wee hours of the morning, we knew that we could turn to Project Chai and instantly benefit from their expertise in crisis management and psychological intervention. Project Chai was a critical part of our Yeshiva's healing process and we relied on them heavily for guidance and direction for all of our mental health needs. We are fortunate to have an organization like Chai Lifeline that was there to help us in our greatest time of need.”**

*- Rabbi Aharon Yisroel Wasserman  
CEO of Yeshiva Toras Chaim of Denver*

**“We are so grateful to Chai Lifeline for providing the critical tools, learning and process to our staff, as well as the staff of other disaster response teams and those who were providing support to first responders and victims of tragedy, for managing their own mental health and well-being in the aftermath of the Surfside towers collapse.”**

*- Miriam Singer*

*President & CEO of Jewish Community Services of South Florida*



**Chai Lifeline**  
PROJECT CHAI CRISIS SERVICES



**When the unthinkable happens,** Project Chai, the crisis intervention, trauma, and bereavement department of Chai Lifeline is ready to respond. Project Chai offers support for children, families, schools, synagogues, and community organizations following an illness diagnosis, sudden death, terror attack, natural disaster, and all forms of trauma.

Project Chai Services include:

- 24-hour / immediate support
- Clinical interventions
- Virtual and onsite consultations and workshops with schools, synagogues, and community organizations
- Educational resources and presentations for community leaders, rabbis, educators, and parents
- Weekend retreats
- Volunteer training in your community

Our paraprofessional volunteers are pre-screened and undergo rigorous training by leading experts, enabling them to respond immediately and effectively, with cultural sensitivity and respect. With hundreds of volunteers around the world, Project Chai teams are ready to respond immediately as crises unfold.

For immediate emergency assistance, contact Project Chai's 24-hour crisis helpline at **855-3-CRISIS** or email **[crisis@chailifeline.org](mailto:crisis@chailifeline.org)**.

**[www.chailifeline.org/crisis](http://www.chailifeline.org/crisis)**

# Memorable Summers Start with Simcha

## Camp Simcha and Camp Simcha Special

For over 30 years, Camp Simcha and Camp Simcha Special, have lived up to their names by bringing joyful and meaningful summer memories for children with pediatric illness. Camp Simcha, named in memory of Dr. Samuel Abraham, was established in 1987 to bring fun and life-changing summer experiences for children battling cancer and other hematological illnesses. Camp Simcha Special, named in memory of Zvi Dovid Obstfeld, brings a positive, growth-oriented environment for children facing the challenges of serious chronic illness to be active and reach their fullest potentials. Through their fully accessible facilities, their dedicated staff and fun and confidence-building activities, Camp Simcha and Camp Simcha Special impacts many children and teens to grow, be inspired and live life to the fullest.

### MERIDIAN VILLAGE



### SCHARF VILLAGE

In Loving Memory of  
**SUSAN ANN SCHARF**

By Her Brother and Sister,  
Melodie and Martin Scharf, Lawrence, NY

**THE STEVEN A.  
GREENBERG  
CHILDREN'S  
WELLNESS CENTER**





**SILBER AND  
SCHEINER FAMILIES  
MEDICAL CENTER**

## **VILLAGES AND COTTAGES AT CAMP SIMCHA**

**Meridian Village**  
Dedicated by Meridian Capital Group

**Scharf Village**  
Dedicated by Martin and Melodie Scharf  
of Lawrence, NY

**Beit Daniella**  
In Memory Of Daniella Nechama  
Moffson, a"h

**Faye's Castle**  
In Memory Of Harav Yaakov Zakheim, z"l  
and Reb Dovid HaKohen Rand, z"l

**Mayer and Chaya Rivka Fischl**

**In Loving Memory of Avraham ben  
Ephraim HaKohen, z"l**

**LH Financial Services**

**Matt's Place**  
A gift of Matthew Arbess and Daniel and  
Marlene Arbess

**Teena and Stu Rubinfeld and Family  
and Esther Wertenteil and Family**  
In Loving Memory of Fred Rubinfeld, z"l  
and Louis Wertenteil, z"l

**Debbie and David Seltzer**

## **ENDOWED FACILITIES AT CAMP SIMCHA**

**Jack and Moishe Horn Campus**  
**Silber and Scheiner Families Medical Center**

**The Steven A. Greenberg Children's  
Wellness Center**

**The Steven A. Greenberg Medical Wing**

**Harry and Jeanette Weinberg Year  
Round Center**

**Stella K. Abraham Family Center**

**The Yoel Abramowitz Garden**

**The Dream Palace**  
In memory of Sarah Esther Bas Yehuda Gershon, a"h

**The Erber Family Happiness Center**

**Fischl Recreation Center at Matt's Place**

**Illean K. Goldberg Social Hall**

**Pam and Craig Goldman Creative Arts Pavilion**

**Alexander and Charlotte Herman Residence**

**Kahal Lev Shlomo**

**The Kindler Family Sports Center**

**Norma Kligman Infirmary**

**Yaakov Nussbaum Photography Center**

**Obstfeld Pavilion**

**Martin D. Schnall Woodshop**

**Rochelle's Gardens**  
In loving memory of Rochelle Berkowitz, a"h

**Sari's Castle**  
Dedicated in memory of Sari Ort, a"h

**Seeling Pool**

**The Shamah Family Way**

**Strasser Family Dining Hall**

**Strasser Family Library**

**Stanton Lake House**

**Shaul and Mary Tawil**  
**Bet Hakneset/Beit Midrash**

**Tepper-Davis Recreation Center**

**Uri's Place**

**The West Wing**  
Dedicated in honor of Hilda Tryfus Hess

# Camp Simcha Without Borders

Launched in the midst of the COVID-19 pandemic, Camp Simcha Without Borders was developed to bring the magic of Simcha to children and communities around the world. Camp Simcha Without Borders operates day camps and hosts special events in cities across the United States and across the globe, providing children who are unable to travel the opportunity to enjoy Simcha in their own hometowns. The program is open to Chai Lifeline clients and their siblings.

In 2021, more than 1,000 children took part in Camp Simcha Without Borders programming and special events in Baltimore, Chicago, Miami, Los Angeles, Lakewood, Deal, Monsey, Brooklyn, Long Island, Canada, England, and Israel.







**Chicago, IL**



**Deal, NJ**



**Miami, FL**



**Los Angeles, CA**



**Lakewood, NJ**



**Canada**



**Baltimore, MA**

“

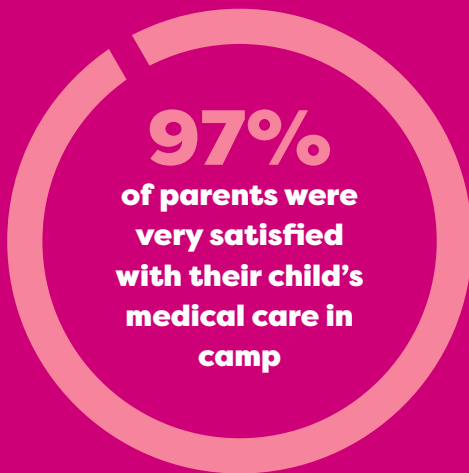
**By encompassing the true spirit of camp and creating an atmosphere that is full of joy and enthusiasm from the performing arts among campers and staff, Camp Simcha Without Borders provides an escape from reality for children going through tremendous hardships.”**

*- Arianna Halpert, program coordinator at The Ralla Klepak Foundation for Education in the Performing Arts*



# Simcha: A Life-Changing Impact

In summer 2021, hundreds of campers, parents and staff were surveyed as part of an ongoing effort to improve services and offerings. The following results highlight the transformative nature of Camp Simcha and reflect its commitment to providing children with an unparalleled summer experience.



**92% of campers said they strongly felt like they belong in camp**



**3 out of 4 campers reported feeling more independent because of camp**

**100%**  
of campers  
said they  
wanted to  
return to  
camp

**96%**  
of staff said their  
experience at Camp  
Simcha made them  
more likely to volunteer  
in their community


**97%**  
of campers said  
all activities were  
very accessible



**96% of counselors reported their camper's confidence grew over the summer**

**93% of parents said their child developed new friendships**



A photograph of two young girls with long hair, smiling and hugging a small, light-colored dog. The girl on the left has a headband with a bow and a small decorative sticker on her forehead. The girl on the right wears glasses. They are both wearing light-colored shirts. The background is blurred, showing other people and what appears to be an outdoor setting.

**“Due to her condition, my daughter could never have experienced sleepaway camp without Camp Simcha Special. There, she has joy and is well cared for... She makes friends with other sick kids, internalizing the empathetic values of tolerance and inclusivity as ‘normal’—giving her strength to go home for the next year and face her illness. We as a family also get a break from the meds and the busy schedule. We have confidence she is ridiculously happy, and the other kids can get extra attention. The respite is great for everyone!”**

*- Tova, Baltimore, MD*

**“Camp boosted my son’s confidence to become more independent even when it takes so much effort!”**

*- Shlomo, Brooklyn, NY*

**“Thank you for making my daughter feel like the luckiest girl in the world. Thank you for making her feel like she has a place all her own, where she gets to do whatever she wants with no limits. Thank you for giving our family two weeks to slow down our pace and be present with each other in a different way. Thank you, thank you, thank you!”**

*- Rachel, Passaic, NJ*

# i-Shine After School Programming

Designed to meet the unique needs of elementary and middle school-aged children living with illness or loss in their families, i-Shine provides afterschool programming in a supervised, nurturing, and fun environment. The program pairs young participants with high school-aged mentors and counselors who provide homework assistance and tutoring, play games, and engage in sports and other recreational activities. Dinner, snacks, and transportation are provided. Learn more at [www.chailifeline.org/ishine](http://www.chailifeline.org/ishine).



**Southeast**



**Teaneck, NJ**



**Kidz Konnect, Lakewood, NJ**



**Midwest**





“

Watching how the high school students from our community invest their time in these children is so special. i-Shine was profoundly impactful on me and I would encourage everyone to get involved.”

- Rabbi Shay Schechter,  
Rabbi and Rosh Beit Midrash at the  
Young Israel of Woodmere, NY

**Five Towns, NY**



**West Coast**



**Westchester / Riverdale**



**Achim B'Yachad**



**Chai Lifeline**

I-SHINE AFTER SCHOOL PROGRAM

A photograph of a man and a young boy sitting in an arcade, playing video games. The man is on the right, wearing a white shirt, and the boy is on the left, wearing a dark shirt. They are both smiling and holding video game controllers. The background shows various arcade games, including one with a screen displaying a game. The entire image has a blue color overlay.

“

**Having a child in and out of the hospital has been the hardest experience of my life. I started to feel like all doors were closing on me. And then I listened to my friend's advice and called Chai Lifeline. They have lifted me and my family up and have brought us hope again. I am forever grateful.”**

*– Sarah, Chai Lifeline mother, Phoenix, AZ*



# A Lifeline For The Entire Family

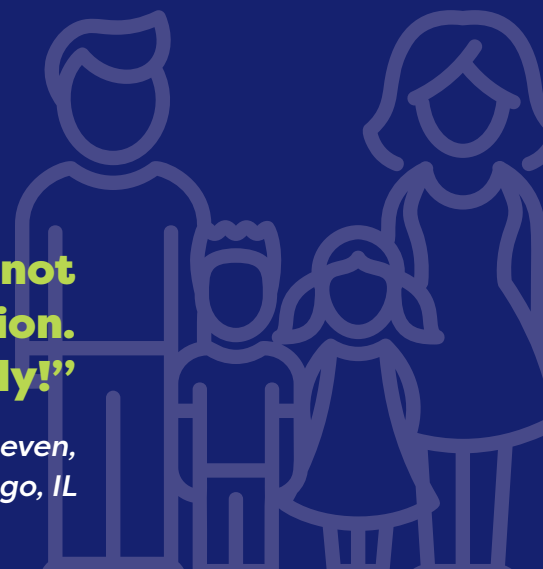
From the moment of diagnosis, Chai Lifeline is there to provide unparalleled support to young patients and their families through a variety of innovative services and programs. Coping with pediatric illness can be extremely difficult and isolating for the sick child, their parents, and siblings. The dedicated case managers serve as the family's portal to Chai Lifeline, helping the entire family navigate the complexities and uncertainties of the medical journey.

From counseling and crisis intervention to Big Brothers/Sisters activities and year-round family events and retreats, all of Chai Lifeline's programs and services are provided at no cost to families, allowing them to focus on what matters most—caring for their loved ones.



**“Chai Lifeline is not  
an organization.  
It is a family!”**

*- Chai Lifeline father Steven,  
Chicago, IL*





# Year-Round Programs & Services

## MAYER & CHAYA RIVKA FISCHL CHILDREN'S SERVICES

**Disney World Trip**  
Sponsored by the Ohr Meir Foundation  
*Four days that change lives for sick kids.*

**Friends 'n Fun Weekends**  
In memory of Sari Ort, a"h  
*Weekend boosts of confidence and courage.*

**Honey Engel Toy Drive**  
*Holiday toy drives*

**Leon and Zipporah Goldstein Simcha Program**  
*Holiday food packages for hospitalized children.*

**Hartman Family Foundation**  
**Wish at the Wall**  
A project of Chai Lifeline Midwest  
*A celebration of life over illness for teens.*

**i-Shine**  
*After-school fun, assistance, and friendship.*

**i-Shine Teaneck**  
In memory of Ilana Michal Schwartz, a"h

**i-Shine West Coast**  
Sponsored by Helena and Steven Usdan

**i-Shine Westchester/Riverdale**  
In memory of Robert A. Finkelstein, z"l

**Kidz/Tweenz Konnect (NJ):**  
Sponsored & hosted by Mayer & Chaya Rivka Fischl

**Joseph and Chana Kornwasser Color My World:**  
**Kids Helping Kids Through Art**  
In memory of Mark (Mottel) Kornwasser, z"l  
*Creative arts help children express themselves and find friendship.*

**The Joseph and Elsie Listhaus ChaiLink Program**  
*Connecting children to classrooms, teachers, and friends.*

**Louis Wertenteil Heart-to-Heart**  
*"Big Brothers and Sisters" for kids and sibs.*

**Elimelech Moskowitz Homebound Educational Learning Program**

**Shaindy Leffel Memorial Lending Library**

**Ari Adler Adventures in Art**  
*Creative and therapeutic self-expression through art.*

## COMMUNITY SERVICES

**Bellows National Crisis Intervention**  
*Project CHAI, counseling, and retreats to help families and communities heal after tragedy.*

**David J. and Dina Lipins Publications**

**Bryna Fertig Volunteer Training**

**Martha Prince 6xChai Volunteer Program**

**Dr. Leon and Frances Gersten Z"L**  
**National Counseling Program**

## FAMILY SERVICES

**Solomon's Children's Initiative:**  
**A SuperFund for the Future**

**Professional Case Management**  
*Ongoing emotional support for families.*

**LH Financial Services**  
**Annual Winter Retreat**  
*A weekend of unprecedented support for Chai Lifeline families.*

**National and Regional Retreat Programs**  
*Intensive peer and professional support.*

**Insurance Support Service**  
*Professional advice and assistance.*

**Donald Alan Harris Healing Hearts Bereavement Program**  
*Facilitates healing after untimely deaths.*

**Stella K. Abraham Family Center**  
**Located on the Jack & Moishe Horn Campus**  
*Time out and away from illness.*

**Pamela and Craig Goldman River Retreat**  
*A private, single-family retreat.*

**Chai House**  
*"Home away from home" for families of hospitalized children.*

**Bernice Rimberg "Our Sibs" (Specially Important Brothers and Sisters)**  
*Activities for brothers and sisters.*

**Ariella Horenstein Music in Our Lives**  
*Integrating music into programs and activities.*

**Joan and Shael Bellows Family Day**  
**A Project of Chai Lifeline Midwest**  
*An exciting day at a major theme park.*

**The Sohacheski Family Relax, Renew, and Reconnect**  
In memory of Leo Presser, z"l  
*Weekend getaways for parents.*

**The Sohacheski Family Beauty From Within**  
In memory of Florence Presser, a"h  
*A rejuvenating day for moms.*

**Chai Family Centers**

**Bernard & Lucille Katz ChaiLine Telephone Support Groups**

## SUMMER PROGRAMS LOCATED ON THE JACK & MOISHE HORN CAMPUS

**Camp Simcha**  
Named in memory of Dr. Samuel Abraham, z"l  
*The foremost summer camp for youngsters with cancer and other life-threatening illnesses.*

**Camp Simcha Special**  
Named in memory of Zvi Dovid Obstfeld, z"l  
*A magical camping experience for chronically ill children and teens.*

**Camp Simcha Without Borders**  
*Bringing the Simcha experience to children and communities around the world.*



## Special Funds and Initiatives

### **THE EVAN LEVY Z”L FUND, encompassing:**

Solomon’s Children’s Initiative:  
A SuperFund for the Future

Ralla Klepak Midwest Performing Arts  
Summer Scholarship Fund

Anne and Lee Samson Fund for Tomorrow

The Herman and Pearl Altman Children’s Fund

Rochella and Uri Benenfeld Sibling Fund

Honey and David Berger Fund

Colburn and Sobel Families Children’s Fund

Uncle Danny Fund

Shimmy Golub Grant-a-Wish/Weingarten  
Wishathon Fund

Reana Greenfield, a”h Chesed Fund

Mary and Mortimer Greenstein Memorial Fund

Evelyn Plotsker Goldstein Family Fund

Charna Radbell Gift of Sunshine Fund

Scott Satran Memorial Fund

Ann and Pinky Sohn Fund

# Where You Can Find Us

## Regional Offices

### New York

151 West 30th Street  
New York, NY 10001  
(212) 465-1300

### New Jersey

5 Airport Rd  
Lakewood, NJ 08701  
(732) 719-1700

### Mid-Atlantic

600 Reisterstown Road.  
Baltimore, MD 21208  
(410) 205-2085

### Midwest

6600 N. Lincoln Avenue  
Lincolnwood, IL 60712  
(847) 763-1818

### West Coast

Sohacheski Family Center  
475 S. Robertson Boulevard  
Beverly Hills, CA 90211  
(310) 274-6331

### Southeast

2699 Stirling Road, Suite B303  
Fort Lauderdale, FL 33312  
(305) 956-9990

## Camp Simcha

430 White Road  
Glen Spey, NY 12737  
(845) 856-1432

## Chai House

Philadelphia, PA  
3434 Sansom Street, Apt. 3F  
Philadelphia, PA 19104

## River Retreat

Mahwah, NJ  
Pamela & Craig Goldman River Retreat  
1058 Ramapo Valley Road  
Mahwah, NJ 07430

## Chai Family Centers

Brooklyn, NY  
Ilana Schindler Chai Family Center  
1034 East 14th Street  
Brooklyn, NY 11230

Chicago, IL  
6600 N. Lincoln Avenue  
Lincolnwood, IL 60712

Ft. Lauderdale, FL  
2699 Stirling Road, Suite B303  
Fort Lauderdale, FL 33312

Long Island, NY  
Adeline S. Zucker Chai Family Center  
91 Carman Avenue  
Cedarhurst, NY 11516

Monsey, NY  
321 Route 59, Suite W5  
Tallman, NY 10982

New York City, NY  
151 West 30th Street  
New York, NY 10001

## International Affiliates

### Belgium

Sint Thomasstraat 36  
2018 Antwerp, Belgium  
(32) 495-198-100

### Canada

Toronto Office  
300A Wilson Ave.  
Toronto, ON, M3H 1S8  
647-430-5933

### Montreal

1090B Pratt  
Montreal, QC H2V2V2  
514-667-7041

### England

Camp Simcha Amélie House,  
221 Golders Green Road,  
London NW11 9DQ  
(44) 208-202-9297

### Israel/Chaiyanu

HaRav Raphael Katsenelbogen St 81  
Jerusalem, Israel  
(972) 02-658-3000



# Leadership

## Board of Directors

Sol Mayer  
Mordy Rothberg  
*Presidium*

Joe Hammer  
*Chairman of Executive Committee*

Larry Spiewak  
*Co-Chairman of Board*

Melvin Brill  
*Chairman Emeritus*

Mechel Berger  
*Secretary*

Shimmy Bertram  
*Treasurer*

Mayer Fischl  
Brian Haimm  
David Klein  
Moshe Klein  
Abie Maleh  
David Mandelbaum  
Hillel Moerman  
Elliot Moskowitz  
Avigail Rosemore  
Eli Schron  
Alan Shamah  
Shalom Stein  
Moshe Taub  
Daniel Weingarten  
*Members*

Roth & Co.  
*Auditors*

## Executive Leadership

Rabbi Simcha Scholar,  
*Chief Executive Officer*

Rabbi Abraham Cohen,  
*Executive Director*

Rabbi Mordechai Gobioff,  
MSW,  
*Director of Client Services, National*

Rabbi Dr. Dovid Fox  
*Director of Project Chai*

Nachman Maimon,  
*Director, Camp Simcha/Camp Simcha Special*

Esther Bergman  
*Chief Financial Officer*

Matt Yaniv  
*Chief Marketing Officer*

Rabbi Sruli Fried, MSW  
*Executive Director of Bike4Chai*

Elliot Halperin  
*Chief Development Officer*

## Development

Rabbi Arye Adest  
*Director, Community Affairs*

Boruch Ber Berman  
*Director of Development NJ/PA*

Rabbi Levi Katlowitz  
*Director of Community Development*

Andy Lauber  
*Director of Community Relationships*

Nataly Weiss  
*Director of Leadership Development*

## Bike4Chai

Rabbi Sruli Fried  
*Executive Director*

Zevi Bamberger  
*Director*

## Team Lifeline

Moshe Turk  
*Director*

## Regions and Affiliates

### Greater New York

Dr. Cheryl Book  
*Director of Clinical and Family Services*

Esther Schwartz, MA  
*Director of Hospital Services*

### Mid-Atlantic

Nechama Miller  
*Senior Case Manager*

### Midwest

Rabbi Shlomo Crandall  
*Director*

### New Jersey/Pennsylvania

Rabbi Sruli Fried, MSW  
*Director*

### Southeast

Mathew Weissbaum  
*Director*

### West Coast

Randi Grossman, MPH  
*Director*

### Camp Simcha UK

Neville Goldschneider  
*Director*

### Chai Lifeline Antwerp

Avi Maier  
Betty Maier  
*Directors*

### Chai Lifeline Canada

Rabbi Mordechai Rothman  
*Director*

### Chaiyanu/Chai Lifeline Israel

Elad Maimon  
*Director*

# Together, we can make a difference in the lives of those impacted by childhood illness.

## How You Can Help



### **Make A Monetary Contribution**

Every donation to Chai Lifeline helps ease the suffering of children confronting pediatric illness and their loved ones. Make a tax-deductible donation online by visiting [www.chailifeline.org/donate](http://www.chailifeline.org/donate) or by calling 877-CHAI-LIFE.



### **Stock Donation**

Maximize your philanthropic impact and minimize your potential tax liability by donating your long-term appreciated securities. Chai Lifeline accepts gifts in the form of stock donations, as well as contributions from donor-advised funds. Call 877-CHAI-LIFE to learn more.

### **Donate A Vehicle**



Donate your used car, truck, motorcycle, boat, RV or trailer to Chai Lifeline. Schedule a free pickup or tow over the phone, or by filling out a secure online form. Visit [www.chailifeline.org/cars](http://www.chailifeline.org/cars) or call 844-485-4663 for more information.

### **Real Estate Donation**



Giving a gift of real estate, such as a personal home, vacation home, or undeveloped property, can be a highly effective philanthropic and financial strategy. By donating all or part of your real estate to Chai Lifeline you may be able to reduce your capital gains tax or receive a tax deduction for the appraised value of your property. Learn more at [www.chailifeline.org/realestate](http://www.chailifeline.org/realestate) or by calling 732-719-1721.



## **Planned or Estate Gift**

Help transform lives for years to come with a bequest, estate contribution or other legacy gift. Visit [www.chailifeline.org/legacy](http://www.chailifeline.org/legacy) or call 212-699-6608 to learn more.



## **Cryptocurrency**

Save on your taxes by donating cryptocurrencies like Bitcoin to Chai Lifeline. Your generous donation will help provide critical programs and services to thousands of families around the world. Visit [www.chailifeline.org/crypto](http://www.chailifeline.org/crypto).

A photograph of a man in a dark suit and tie, smiling as he pushes a young boy in a wheelchair. The boy is also smiling and looking towards the camera. They are outdoors on a paved path with trees in the background. The entire image is overlaid with a semi-transparent green filter.

**Learn more at [www.chailifeline.org/support](http://www.chailifeline.org/support)**







## Get Moving!

Take part in Bike4Chai and Tour de Simcha, our premier cycling events for men and women of all skill levels. Are you a runner? Join Team Lifeline, our endurance training program that brings groups of people to destination races across the country, including Miami and NYC.

**[www.bike4chai.com](http://www.bike4chai.com)**

**[www.tourdesimcha.org](http://www.tourdesimcha.org)**

**[www.teamlifeline.org](http://www.teamlifeline.org)**

## Financial Highlights

In 2021, your contributions allowed Chai Lifeline to further its mission and provide unparalleled support to its client population. Eighty-six cents of every dollar donated, was used for programs and services that directly benefit our children and families.

**Programs  
& Services**  
**86%**

**Administrative  
Expenses**  
**6%**

**Fundraising**  
**8%**









**[www.chailifeline.org](http://www.chailifeline.org)**